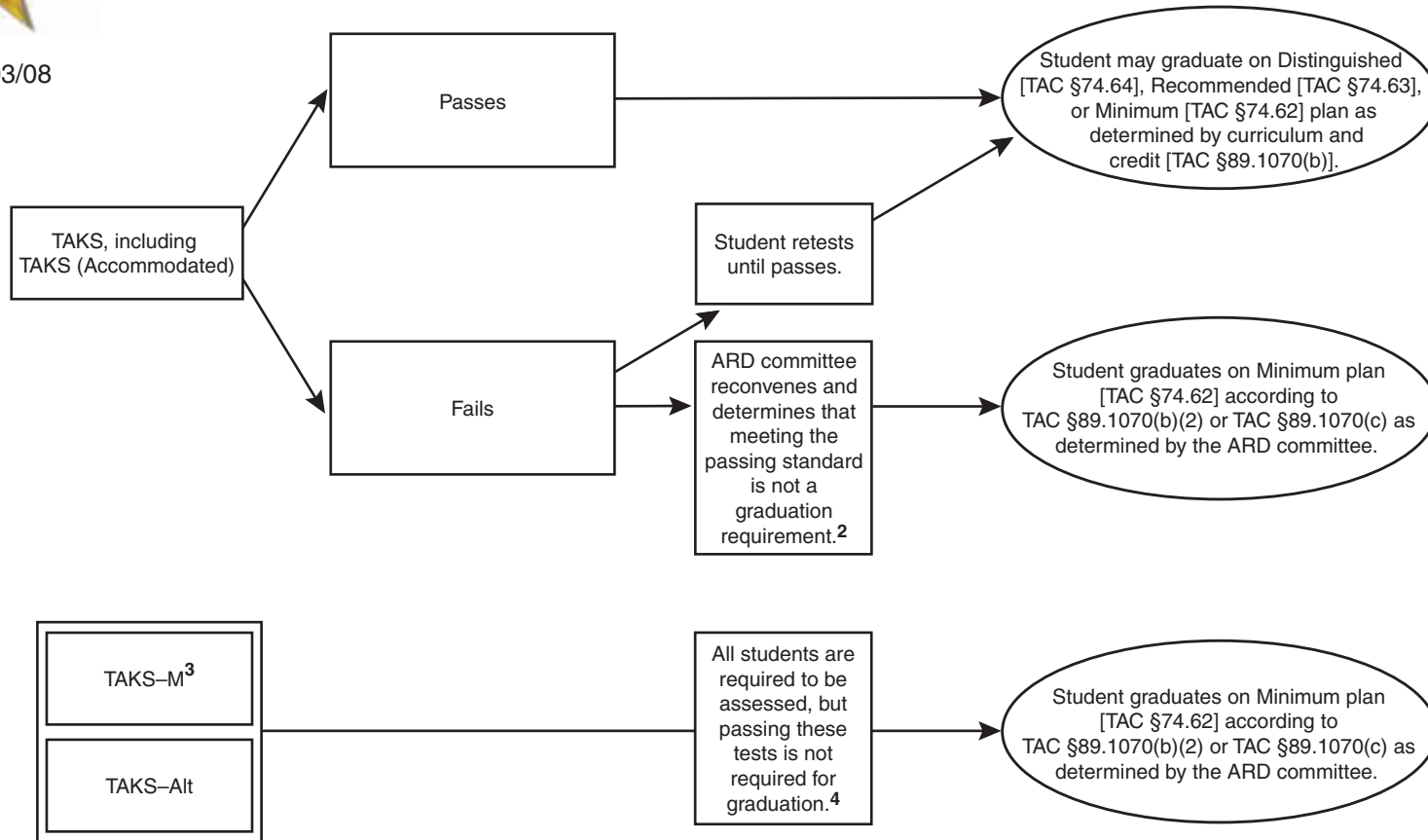




Posted 12/03/08

Flowchart A Guidelines for ARD Committees Regarding Testing Requirements for Students Entering Grade 9 in 2008–2009 (and thereafter)¹



¹ In November 2007, new Commissioner's Rules regarding exit level assessments were established. Students who enter grade 9 during the 2008–2009 school year (and thereafter) must meet the requirements of the new rule, TAC § 89.1070(b)(1).

² Simply failing the test is not sufficient reason to justify changing the IEP to reflect no graduation requirement/no retests.

³ Students who take at least one TAKS–M subject-area test in grade 11 graduate on the Minimum plan.

⁴ Retest opportunities are not available.

Additional information is available at <http://www.tea.state.tx.us/special.ed/guidance/rules/89.1070.html>.